



PRODUCT RANGE CATALOGUE



NOTHING IS OPAQUE

RADIOGRAPHIC IMAGING | SURGICAL IMAGING | PATIENT MONITORING | CARDIAC CARE | DIATHERMY
RESPIRATORY CARE | DENTAL CARE | ANAESTHESIA DELIVERY | VETERINARY CARE | TELEMEDICINE



Nothing is Opaque

At Skanray 'Nothing is Opaque'. Skanray not only enables diagnosis of human anatomical and physiological abnormalities and measurement of vital signs, but is also governed by its philosophy of 'transparency' in all its transactions with its customers, investors, suppliers and business associates. Skanray follows a fair and transparent pricing policy to ensure that its customers save their precious time and money.



Total solutions and life cycle support

Skanray designs and manufactures in-house each of its products across plants in Amsterdam, Bologna, Mexico city, Mysore, Orlando, Sao Paulo & Suzhou and ensures that the customer gets relevant technology upgrades and service support throughout the life of the product. Skanray stocks adequate spares for obsolescence management and technology upgrades so that micro components do not cause a need for equipment replacement. With over 100 dealers and 50 service franchisees, the sales and service network of Skanray is one of the strongest in the industry. With a large pool of trained and qualified service engineering professionals, we offer the best uptime as compared to the industry standards.

PRODUCT LIFE CYCLE MANAGEMENT



CONCEPT



DESIGN & DEVELOPMENT



MANUFACTURING

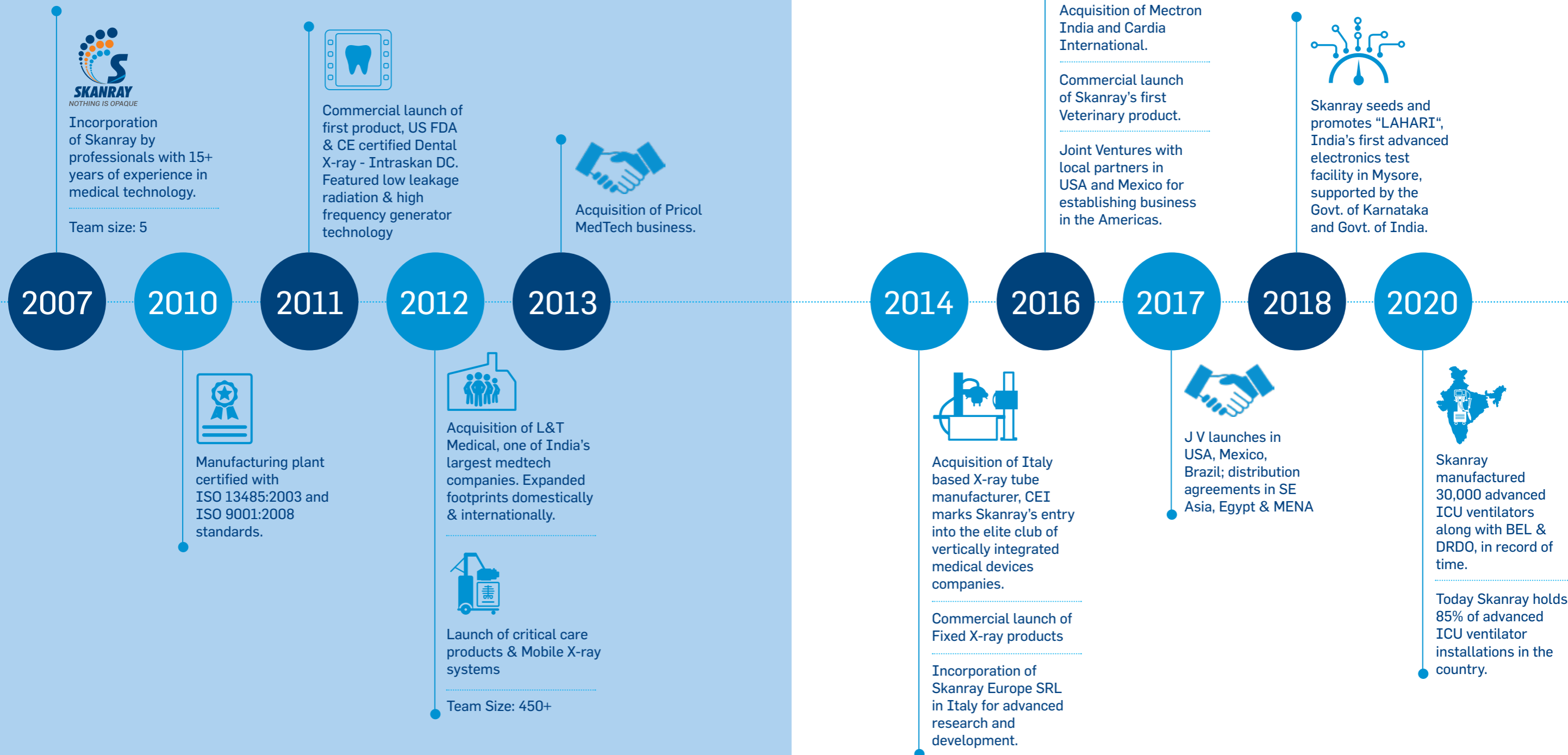


SERVICE SUPPORT

Our Story

Awards and Accolades

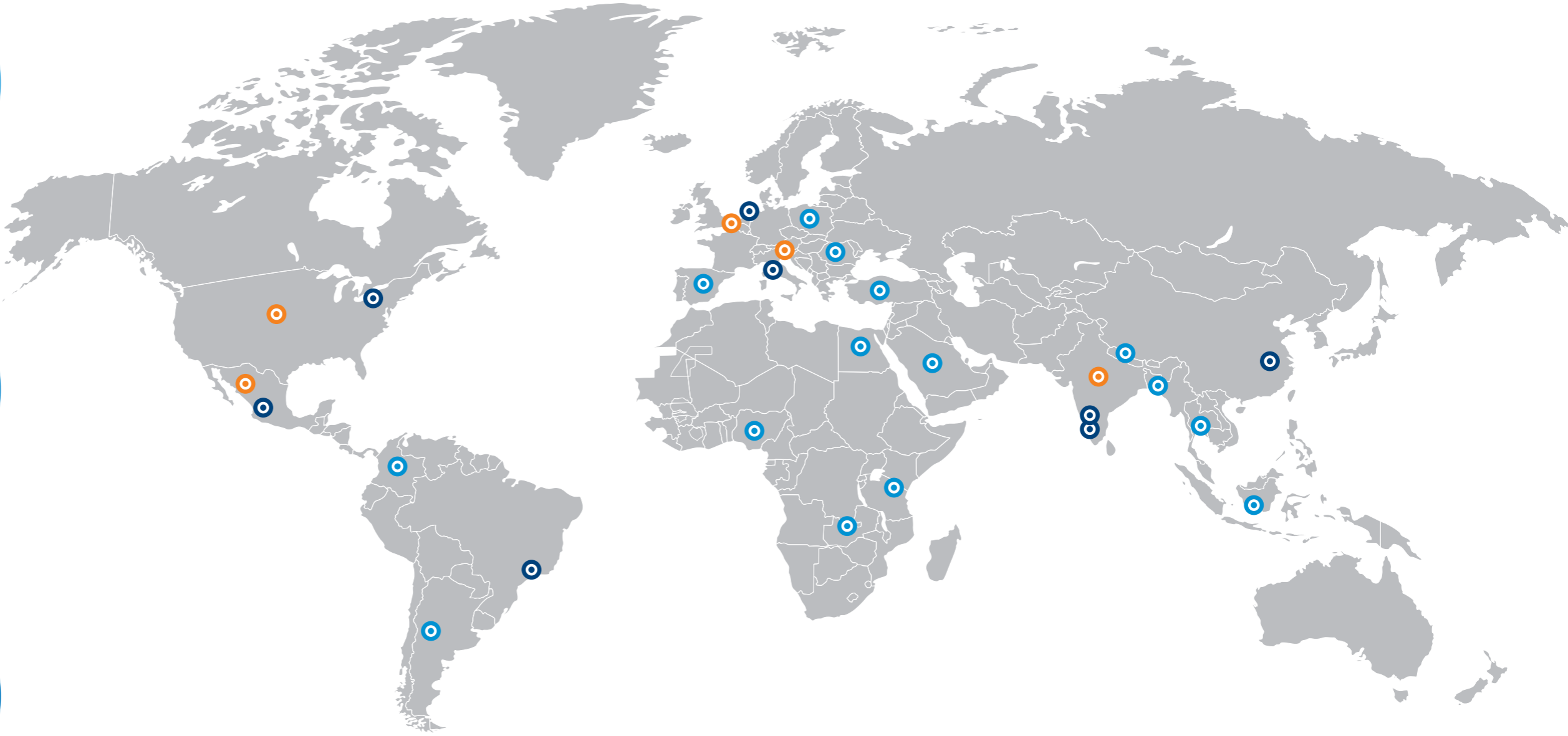
Skанray is one of the fastest growing Global Medical Devices and Primary Healthcare Solutions company. It has been recognized by Forbes, Frost & Sullivan, TIE-Lumis, IESA, Red Herring & Economic Times for Business Excellence and Values.



100,000+
INSTALLATIONS
ACROSS THE GLOBE

700+
MEDTECH
PROFESSIONALS

50+
WORLD CLASS
PRODUCTS



● Manufacturing Plants ● Skanray Direct Offices ● Distributors

80+
ADVANCED
TECHNOLOGY
PATENTS

7
MANUFACTURING
PLANTS
GLOBALLY

Global Footprint

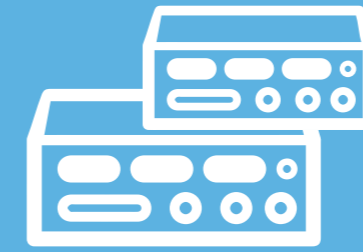
Skanray brings together the best of design and technology compliant with international standards enabling its presence in several markets globally.



RADIOGRAPHIC
IMAGING



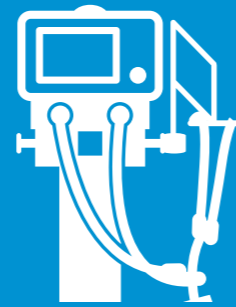
CARDIAC
CARE



SURGICAL DIATHERMY



SURGICAL
IMAGING



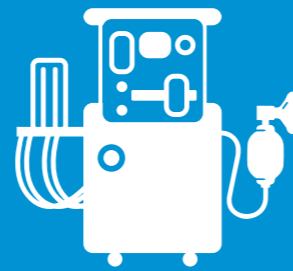
RESPIRATORY
CARE



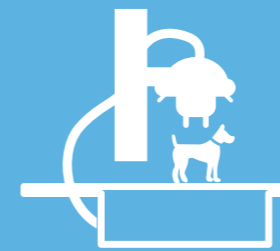
DENTAL
CARE



PATIENT
MONITORING



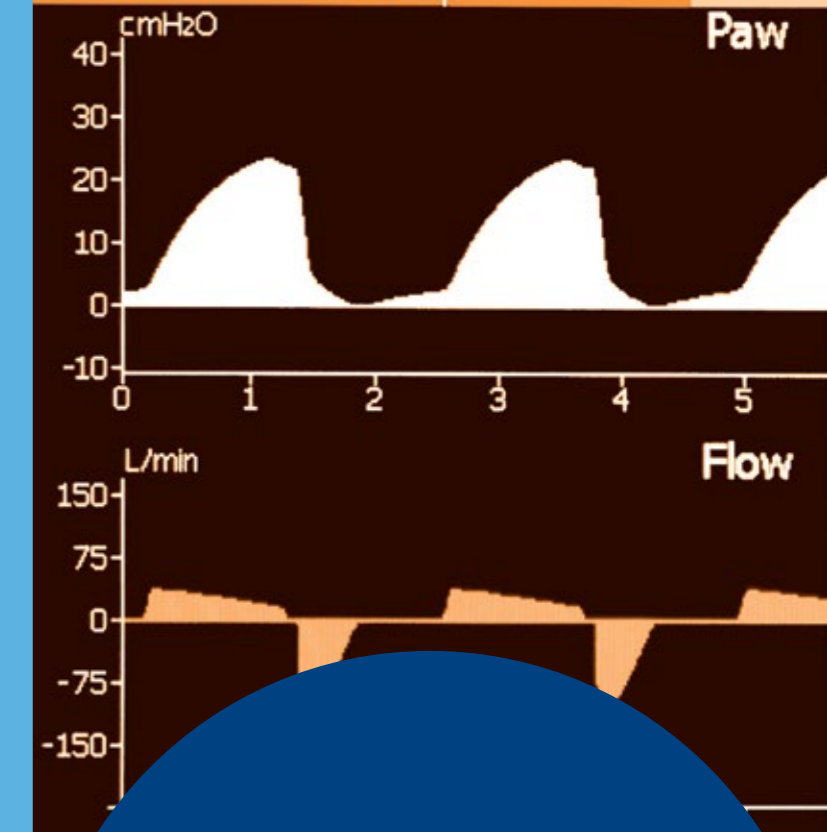
ANAESTHESIA
DELIVERY



VETERINARY
CARE



A/CMV - VC
04:03:16 10:04



PRECISION, RELIABILITY, CARE

Products & Solutions



Radiographic Imaging

Extremely light-weight, easily manoeuvrable and versatile. Multiple positioning options.

High frequency generator with near-zero leakage radiation. Provides high resolution images.



microSKAN

- ▶ Ultra light mobile HF X-Ray (<55 kg)
- ▶ 2.8kW, 60mA, 200kHz with APR
- ▶ Hand-held and integrated console for parameter setting and exposure control
- ▶ 90° collimator rotation
- ▶ Tube-head rotation
- ▶ Suitable for NICU, ICU, Trauma, Ortho & Ambulance



microSKANion

- ▶ Battery operated version of microSKAN
- ▶ 2.8kW, 60mA, 200kHz with APR
- ▶ Providing up-to 200 exposures on full charge
- ▶ 100+ exposures under controlled environment when fully charged
- ▶ Collimator & Tubehead rotation
- ▶ Total weight approx. <110 kg



SKANMOBILE

- ▶ 4 kW, 100mA, 200 kHz Mobile HF X-Ray
- ▶ Draws clean power from mains
- ▶ Negligible leakage radiation
- ▶ Easy to move (<85 kg)
- ▶ 90° collimator rotation
- ▶ Tube-head rotation
- ▶ Light field intensity min 160 Lux @ 1m
- ▶ Suitable for NICU, ICU, Trauma & Ortho

SKANMOBILEDR

- ▶ Ultralight mobile HF DR system
- ▶ 4 kW, 100 mA, 200 kHz with APR (Anatomically Programmed Radiography)
- ▶ Integrated console on tube head
- ▶ Bar-code reader for easy patient data input & storage (optional)
- ▶ Near zero leakage radiation
- ▶ 90° collimator rotation for easy positioning
- ▶ Tube-head rotation for minimal mobility patients

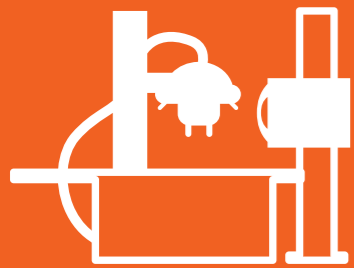
Workstation

- ▶ Quad Core Processor
- ▶ Multiple operating system options
- ▶ 12" QHD (2160 x 1440 Pixels) resolution LCD display
- ▶ Dual touch 10 finger capacitive touch screen with IP-55 protection
- ▶ 8GB RAM and 256 GB Solid State Drive
- ▶ Interface - USB 3.0, LAN & HDMI
- ▶ 11 hours back-up with twin batteries

Flat panel detector

- ▶ Direct deposit CSI scintillator, wireless panel
- ▶ 14" x 17" active display area
- ▶ Image preview time: <10 seconds
- ▶ Exposure control: Full field automatic exposure detection
- ▶ Dual band 2.4GHz/5GHz wireless transmission





Radiographic Imaging

High power, clinically versatile and fast in providing output.

Better speed of response for better throughput in radiology departments.



microSKANDR

Trolley

- ▶ Ultra light mobile HF X-Ray with DR
- ▶ 2.8kW, 200kHz, 60mA with APR
- ▶ Hand-held and integrated console for parameter setting and exposure control
- ▶ 90° collimator rotation
- ▶ Tube-head rotation
- ▶ Suitable for NICU, ICU, Trauma, Ortho & Ambulance

DR

- ▶ Flat panel detector with ISS & smart switch technology
- ▶ CsI (Cesium Iodide) Scintillator
- ▶ 2304 x 2880 Pixels/150 μm pixel pitch
- ▶ Approx 1 to 8 sec. cycle time (wired mode)
- ▶ Approx 11 sec. cycle time (wireless mode)
- ▶ Wireless standard - IEEE 802.11n, 5.2 GHz
- ▶ Battery recharging time - approx. 3h
- ▶ Detector's external size - 384 x 460 x 14.8 mm/3.5 kg



SKANDR630i

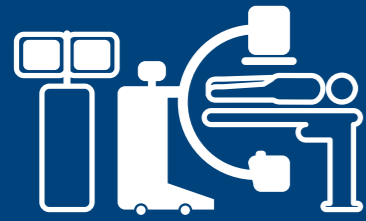
- ▶ 50kW HF generator with flat panel digital radiography platform
- ▶ kVp Range: 40-150
- ▶ mA Range: 10-630
- ▶ 16-bit dynamic range, 100 μm pixel pitch 17"x17" CsI flat panel detector
- ▶ Intelligent anti-collision system
- ▶ Fully motorized movements
- ▶ 3-Preset auto-positioning
- ▶ Advanced image processing & DICOM compatible software



SKANRAD400

- ▶ 32kW high frequency fixed RAD system
- ▶ kVp: 40kV-125kV in steps of 1kV
- ▶ mA: 10mA-400mA in 17 steps
- ▶ mAs range: 0.32 mAs to 630 mAs in 34 steps
- ▶ Exposure time range: 5 ms to 5 sec.
- ▶ Integrated tube head with no bulky cables
- ▶ Rotating anode with dual focal spots
- ▶ Fully motorized horizontal and vertical movements
- ▶ +120° & -180° Tube head rotation
- ▶ ±180° Tube head vertical column rotation
- ▶ 4 Way floating table
- ▶ Well routed minimal conduit for cables
- ▶ 10.4" LCD touch screen tube head console
- ▶ Floor/wall mount console with 10.4" LCD touch screen (optional)
- ▶ Chest bucky suitable for cassette or FPD of sizes up to 17"x17"
- ▶ Hand held touch screen console with X-ray exposure parameters
- ▶ Digital protractor for tube head positioning
- ▶ LED collimator
- ▶ AEC control (optional)





Surgical Imaging

Multi-functional and DICOM compatible. Can be used for a wide range of applications.

Provides high-resolution images.



SKAN C

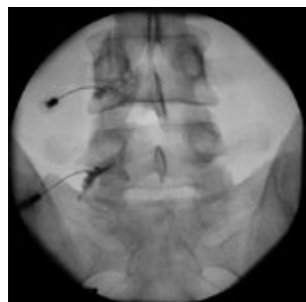
magnum

- ▶ High-Frequency generator technology with switching range from 80-250 kHz
- ▶ Near Zero leakage radiation
- ▶ 3.5 kW dual processor monoblock generator with proprietary radiation shielding technology
- ▶ Ideal for use in Neurology, Orthopaedic, Urology, Gastrointestinal, Pain management, Interventional & Peripheral Vascular Images
- ▶ Image capture with 1k x 1k resolution for exceptional image quality
- ▶ 10.4" TFT LCD Touch console with optical encoder and hot keys for easy operation
- ▶ Laser Aimer & Virtual Collimation for exposure-less alignment of Region of Interest
- ▶ Vascular Mode, DSA, Trace & Roadmap features as standard
- ▶ Virtual Dose Management System to ensure absolute safety
- ▶ Image Enhancement Features including digital zoom & contrast control for added viewing capabilities
- ▶ DICOM 3 support & storage of over 100,000 images as standard
- ▶ Multi-Window Interface for increased viewing convenience
- ▶ 3.5kW, 80-250kHz HF Flouro
- ▶ kVp Range: 40 - 110
- ▶ mA Range: 0.2 - 8
- ▶ 9" triple field IITV
- ▶ CAN controlled IRIS collimation
- ▶ Pulse Fluoroscopy mode upto 12mA
- ▶ Low fluoro upto 3mA, High fluoro upto 8mA, Burst fluoro up to 30 frames
- ▶ Laser Aimer, IRIS collimation, Virtual collimation, Pulse fluoro, Airkerma on display
- ▶ Compatible with major Neuro-navigation and ESWL systems

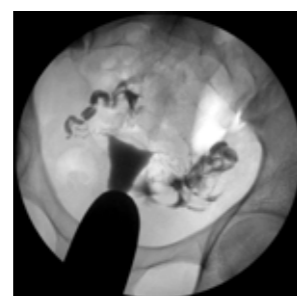


Console Keypad

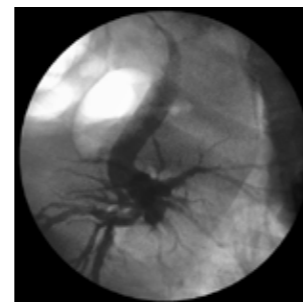
Applications



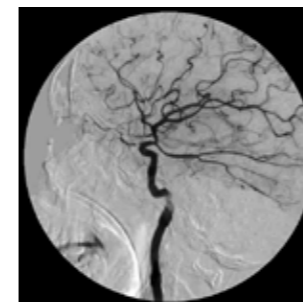
Spine Procedure



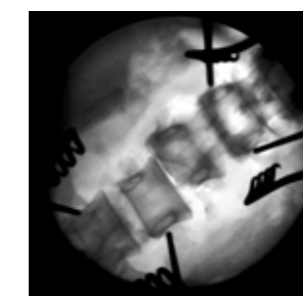
Reproductive



Gastrointestinal



Cerebral



Neurology



Urology



Patient Monitoring

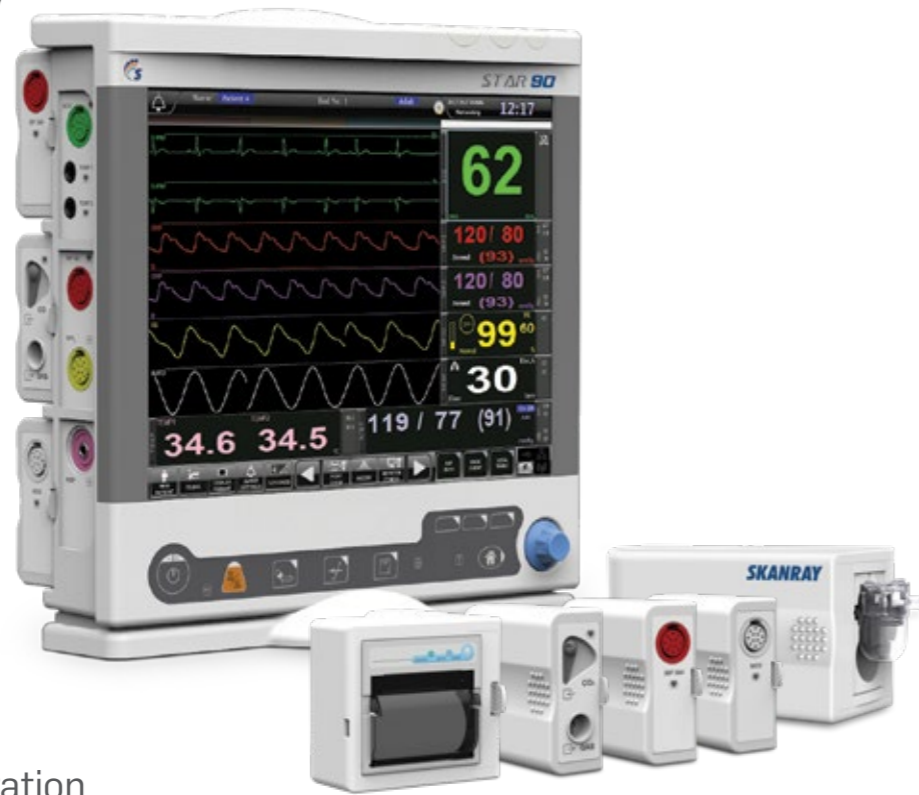
Large portfolio catering to multiple clinical requirements, acuity level and diverse care environments.

Flexible with optimized cost of ownership.



STAR 90

- ▶ 10 channel modular monitor with 15" high resolution LED touch display
- ▶ Adult, Pediatric & Neonatal applications
- ▶ High performance in Low perfusion, Hypothermia, Hypovolemic shock, Vasoconstriction, etc.
- ▶ Advanced features like SatSeconds™, LoSat™, IPI™, etc.
- ▶ ST segment analysis & Arrhythmia analysis, OxyCRG & drug dose calculation
- ▶ Advanced alarm management system
- ▶ Connectivity: USB, HDMI, IABP interface, Central Nursing Station Interface (wired/wireless)
- ▶ Optional Microstream/Mainstream EtCO₂
- ▶ HL7 support for HIS interface
- ▶ Bed to bed connectivity



Standard Configuration



Optional Modules



STAR 65

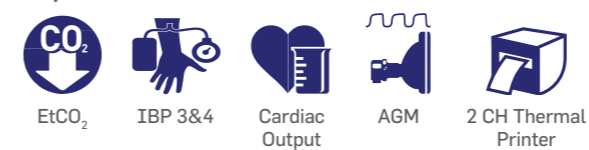
- ▶ 8 channel modular monitor with 12.1" high resolution LED touch display
- ▶ Adult, Pediatric & Neonatal applications
- ▶ High performance in Low perfusion, Hypothermia, Hypovolemic shock, Vasoconstriction, etc.
- ▶ Advanced features like SatSeconds™, LoSat™, IPI™, etc.
- ▶ ST segment analysis & Arrhythmia analysis, OxyCRG & drug dose calculation
- ▶ Advanced alarm management system
- ▶ Connectivity: USB, HDMI, IABP interface, Central Nursing Station Interface (wired/wireless)
- ▶ Optional Microstream/Mainstream EtCO₂
- ▶ HL7 support for HIS interface
- ▶ Bed to bed connectivity



Standard Configuration



Optional Modules





Patient Monitoring

Diverse in terms of screen size, modularity and parameter support, from light weight single-para device to fully featured multi-para equipment.

Ability to connect and communicate with larger networks.



TruSKAN S600

- ▶ 6 channel monitor with 12.1" high resolution LED display
- ▶ Suitable for Adult, Pediatric & Neonatal applications
- ▶ High performance in Low perfusion, Hypothermia, Hypovolemic shock, Vasoconstriction, etc.
- ▶ 168 hours of Graphical & Tabular trends
- ▶ Arrhythmia & ST analysis
- ▶ Upgradable to IBP, *Microstream™ Capnography, Thermal printer
- ▶ Early assessment of patients ventilatory status through *IPI™
- ▶ *SatSeconds™ alarm management to reduce false alarms
- ▶ Anti-theft lock
- ▶ 500 NiBP trend readings, ECG & Arrhythmia recall & 50 patient alarm recall
- ▶ Wired/wireless connectivity to central nursing station

TruSKAN S500

- ▶ 6 channel monitor with 10.4" high resolution LED display
- ▶ Adult, Pediatric & Neonatal applications
- ▶ 168 hours of Graphical & Tabular trends
- ▶ Arrhythmia & ST analysis
- ▶ Upgradable to IBP, *Microstream™ Capnography, Thermal printer
- ▶ Early assessment of patients ventilatory status through *IPI™
- ▶ *SatSeconds™ alarm management to reduce false alarms
- ▶ Anti-theft lock
- ▶ 500 NiBP trend readings, ECG & Arrhythmia recall & 50 patient alarm recall
- ▶ Wired/wireless connectivity to central nursing station



Standard configuration (S600/S500)



Optional modules (S600/S500)



TruSKAN S400

- ▶ 4 channel monitor with 10.4" high resolution LED display
- ▶ Adult, Pediatric & Neonatal applications
- ▶ High performance in Low perfusion, Hypothermia, Hypovolemic shock, Vasoconstriction, etc.
- ▶ 168 hours of Graphical & Tabular trends
- ▶ Arrhythmia & ST analysis
- ▶ *SatSeconds™ alarm management to reduce false alarms
- ▶ Anti-theft lock
- ▶ 500 NiBP trend readings, ECG & Arrhythmia recall & 50 Patient alarm recall
- ▶ Wired/wireless connectivity to central nursing station



COMET PLUS

- ▶ Pulse Oxymeter (Nellcor™) with Plethysmograph
- ▶ Adult, Pediatric & Neonatal applications
- ▶ High performance in Low perfusion, Hypothermia, Vasoconstriction, Excessive motion, etc.
- ▶ Online SpO₂ & PR Graphical Trend
- ▶ Advanced alarm management system including *SatSeconds™



*Microstream™ & IPI™ is owned by 'ORIDION MEDICAL 1987 LTD'

*Nellcor™ & Satseconds™ is owned by 'Medtronic'



Central Nursing Station

Multi-bed and multi-parameter mode options available with wired or wireless monitoring.

Provides efficient patient care and workflow.

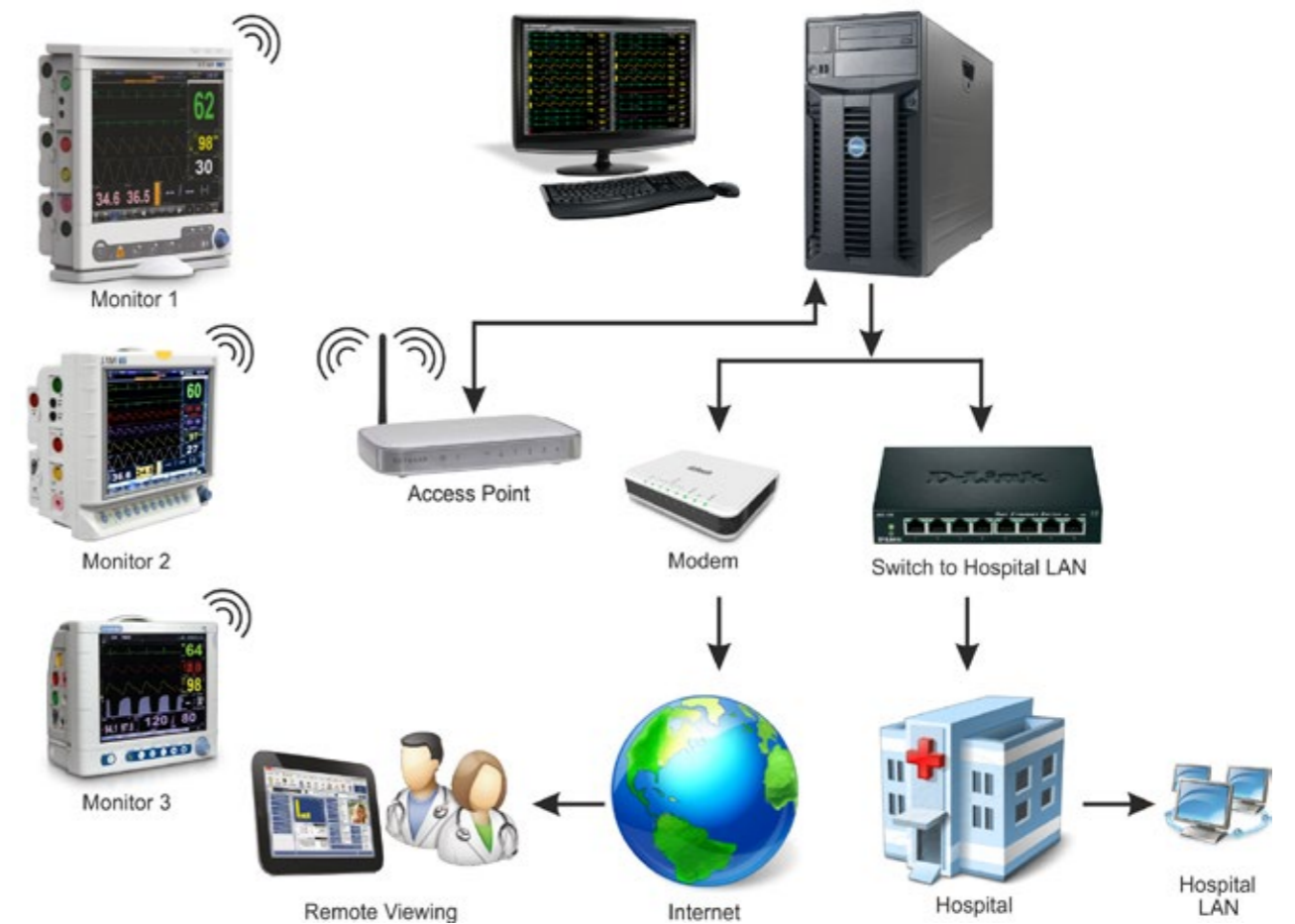


SKYLINE 55

- ▶ Windows OS based Central Nursing Station
- ▶ Monitoring of 8/16 Beds
- ▶ Wired & wireless connectivity to patient monitors (Monitor Dependent)
- ▶ Multi-parameter & multi-bed modes with detailed views
- ▶ Up-to 72 hours of waveform disclosure



SkyView Mini



SKYVIEW mini

- ▶ Central nurses station + remote monitoring solution
- ▶ 16 bed connectivity
- ▶ Connectivity for patient data access over LAN/web
- ▶ Secure patient data access
- ▶ Wired & wireless connectivity to patient monitors (monitor dependent)
- ▶ Up-to 72 hrs of waveform disclosure & trend
- ▶ Alarm recall



Cardiac Care

Ergonomic design, light weight and portable.

Provides easy-to-use functionalities for cardiac care.



CARDISKAN

- ▶ Simultaneous 12 lead ECG
- ▶ High resolution ECG prints with multiple print formats
- ▶ 3.5" TFT display with resistive touchscreen
- ▶ Intuitive hotkeys for quick operation
- ▶ 3 Channel thermal printer
- ▶ Built-in ECG measurements and interpretation
- ▶ Visual alarm indicator

CARDISKAN mini

- ▶ 12 Lead PC based ECG Machine
- ▶ Optional ECG analysis package (Measurement & Interpretation)
- ▶ PDF Print, Patient database management & A4 Print
- ▶ Compact & highly portable



stressSKANcardi

- ▶ Advanced stress test workstation with wireless ECG acquisition unit
- ▶ Accurate ST measurements and automatic arrhythmia detection with clean trace
- ▶ Online filtering & automated baseline correction for stable measurements
- ▶ Standard Bruce protocols and unlimited programmable stress test protocols
- ▶ HRR - Heart rate recovery score
- ▶ Oxygen uptake and METS estimation
- ▶ Clean trace feature – Synthesized ECG rhythm which preserves actual heart rate, beat shape & rhythm
- ▶ Full disclosure of entire test. Enables post processing on saved data
- ▶ Stress test blood pressure equipment interface (Optional)
- ▶ Simple integration with HIS, HER ; Interoperability with PACS, DICOM & HL7
- ▶ High End Treadmill with 180Kg patient weight capacity & walking area of 1500mm



SKANREVIVE SKANREVIVE+

- ▶ Current controlled biphasic defibrillation
- ▶ Synchronised cardioversion
- ▶ 3L/5L ECG support
- ▶ Less than 8 seconds to charge upto 300J
- ▶ More than 100 shocks from a new fully charged battery
- ▶ Quick energy selection option via rotary switch
- ▶ Data storage & event summary
- ▶ 6.5" Colour LED display
- ▶ Built-in thermal printer

Additional Features in SKAN REVIVE +

- ▶ AED with voice prompts
- ▶ Non-invasive demand / fixed pacing
- ▶ Up to 20 seconds of ECG on screen with twin ECG view
- ▶ NIBP, SpO₂ monitoring with alarms
- ▶ Suitable for Adult & Pediatric applications
- ▶ Multifunction adhesive pads
- ▶ Less than 7 seconds to charge upto 300J
- ▶ Data Storage upto 350 ECG records



CardiAid® Public Access Defibrillator

- ▶ Current controlled biphasic defibrillation technology
- ▶ Accurate ECG detection algorithm
- ▶ Ready to use adult / paediatric treatment
- ▶ Pre-connected electrodes
- ▶ Up-to 210 Shocks in a new battery
- ▶ Clear & easy illustrations and verbal instructions
- ▶ In accordance with ILCOR 2015 ERC resuscitation guidelines
- ▶ Configurable voice prompts for CPR duration, sequence and chest compressions
- ▶ Ready-to-communicate with a gateway and ability to send real-time self test results
- ▶ Available in semi-automatic and automatic models



Respiratory Care

SKANRESPIRO SKANRESPIRO plus

- ▶ Pediatric to Adult ICU Ventilator with advanced compressor design
- ▶ Volume & pressure controlled breath types
- ▶ Invasive & Non-invasive applications as standard
- ▶ In-built nebulizer port
- ▶ 3 hrs battery back up
- ▶ Easy integration with Pranaa medical air compressor (optional)

Modes

- ▶ A/CMV-VC
- ▶ A/CMV-PC
- ▶ SIMV-VC+PS
- ▶ SIMV-PC+PS
- ▶ CPAP-VC
- ▶ CPAP-PC
- ▶ NIV-PC

Advanced Modes

In SkanRespiro Plus

- ▶ APRV
- ▶ BI-LEVEL
- ▶ A/CMV-PRVC
- ▶ SIMV-PRVC+PS
- ▶ HFOT



- ▶ Standby for centralised air supply
- ▶ Continuous pressure and hours-run display
- ▶ Peltier driven de-humidification
- ▶ Pump temperature protection
- ▶ Easily attachable with SkanRespiro™ and SkanRespiro Plus™

Tele-medicine Solution



SKANlife dx200

- ▶ Ventilator care station with 10.4" color touch display
- ▶ Modes: BILEVEL, PSV/CPAP & HFOT
- ▶ Vital parameters monitoring - ECG, Heart rate, Blood pressure, SpO₂, Respiratory rate, Temperature & Blood Glucose
- ▶ Oxygen source selection either from CGS or Oxygen concentrator
- ▶ Ergonomic User Interface for ease and quick settings
- ▶ Built in battery backup for ventilator, more than 2 hours
- ▶ Remote monitoring with upgradable two way video communication
- ▶ Integrated medical air compressor
- ▶ Provision for O₂ Concentrator, Humidifier, Glucometer & UPS
- ▶ Automated external defibrillator for cardiac revival



High performance non-invasive ventilation



10.4" touch display



Intelligent alarm for a quick response



>2 hrs battery back-up



Patient monitoring modules



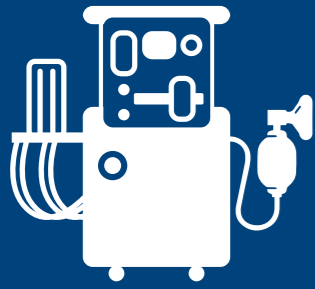
Intuitive user interface



Extended graphic waveform



Remote monitoring



Anaesthesia Delivery

Feature-rich, Safe and provides a perfect mix of performance and robustness.

Quality ventilation options with an intuitive user interface.



SKAN Siesta

- ▶ Advanced anaesthesia workstation with 3 gas pipeline and cylinder connectivity
- ▶ 5 Tube Rotameter with Low Flow Technology
- ▶ Multi-layered barotrauma protection
- ▶ Pneumatic Anti-Hypoxia device with ratio control
- ▶ Dedicated additional N₂O cutoff
- ▶ Independent Auxiliary O₂ output
- ▶ Circle absorber with soda lime capacity of 1.3 kg
- ▶ Auto bypass facility for uninterrupted ventilation
- ▶ Integrated spirometry and oxygen monitor sensors
- ▶ 10.4" intuitive ventilator touch display with advanced modes as standard
- ▶ Internal 3 litre O₂ reservoir
- ▶ Dual Select-A-Tec vaporizer mount with interlocking feature
- ▶ Discernible visual and audio alarms with customizable settings
- ▶ Built-in battery back-up for support up to 3 hours

Modes

- ▶ VC
- ▶ VC-SIMV
- ▶ PC
- ▶ PC-SIMV
- ▶ PSV
- ▶ Spontaneous (SP)



ATHENA 500i

- ▶ 3 gas 5 tube low flow Anaesthesia workstation
- ▶ Dedicated additional N₂O cutoff
- ▶ Independent Auxiliary O₂ output
- ▶ AHD with ratio control
- ▶ Internal 3 litre O₂ reservoir
- ▶ I:E ratio : 3:1 to 1:8
- ▶ Paw display
- ▶ FiO₂ monitoring
- ▶ PIP measurement
- ▶ 6.5" color touch display
- ▶ Volume & pressure wave forms
- ▶ Tidal Volume: 20-1600 ml
- ▶ P-V/F-V loops, PEEP control
- ▶ Advanced closed loop feedback
- ▶ Tidal Volume delivery auto correction
- ▶ Trigger, Apnea time
- ▶ Monitoring MVi, MVe & RR
- ▶ RoHS, CE certified

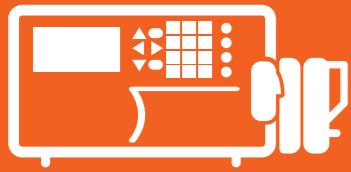
Modes

- ▶ VC
- ▶ VC-SIMV
- ▶ PC
- ▶ PC-SIMV
- ▶ PSV
- ▶ Spontaneous (SP)



ATHENA SV200

- ▶ 3 gas 5 tube low flow anaesthesia workstation
- ▶ Dedicated additional N₂O cutoff
- ▶ Independent Auxiliary O₂ output
- ▶ AHD with ratio control
- ▶ Internal 3 litre O₂ reservoir
- ▶ 6.5" wide display
- ▶ Modes : CMV-VC/PC, SP
- ▶ I:E ratio : 3:1 to 1:8
- ▶ Paw display
- ▶ FiO₂ monitoring
- ▶ PIP measurement



Syringe & Infusion Pumps

floSKAN 3000

- ▶ Micro-continuous syringe pump
- ▶ 3.5" Backlit color LCD touch screen
- ▶ Multiple infusion modes & 11 occlusion levels
- ▶ Accurate transmission mechanism
- ▶ Supports syringes of all standard brands
- ▶ Auto-detection of syringe size, 5, 10, 20, 30, and 50 (60) ml
- ▶ Large speed range (up-to 2000 ml/h for 50 (60) ml syringe)
- ▶ Built-in drug library (1000 drugs)
- ▶ Safety design to aid in monitoring the infusion status
- ▶ Backup power for minimum 6 hours (Optional 12 hours)
- ▶ Compliant with IEC and ISO guidelines



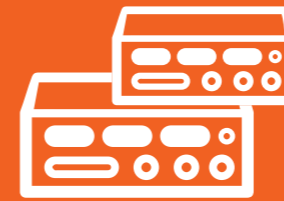
floSKAN 2000

- ▶ Micro-continuous syringe pump
- ▶ Multiple infusion modes and Anti-bolus
- ▶ 3 preset occlusion levels
- ▶ Accurate transmission mechanism
- ▶ Supports multi-brand syringes
- ▶ Compatible with 10, 20, 30 & 50 (60) ml syringes
- ▶ Large speed range (up to 2000 ml/h for 50 (60) ml syringe)
- ▶ Built-in drug library
- ▶ Safety design to aid in monitoring infusion status
- ▶ Backup power for minimum 8 hours
- ▶ Compliant with IEC and ISO guidelines



SKANTruFLO

- ▶ Compact and light-weight for bedside and ambulatory use
- ▶ Supports all standard disposable IV sets
- ▶ Multiple occlusion levels and pressure display
- ▶ Multiple infusion modes and Anti bolus
- ▶ Maximum infusion rate up to 1200ml/h
- ▶ Intuitive touchscreen display with night mode
- ▶ Pole mountable
- ▶ Backup power up to 5 hours
- ▶ Compliant with IEC and ISO guidelines
- ▶ Optional drop sensor

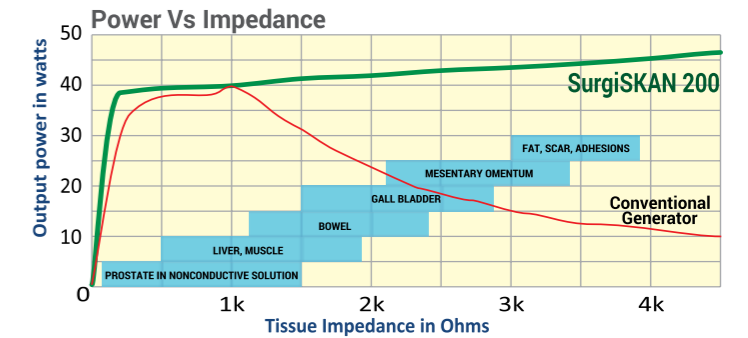


Diathermy

surgiSKAN 200

- ▶ Microprocessor controlled
- ▶ Smart feedback system
- ▶ Pre-defined programs
- ▶ Monopolar and bipolar modes
- ▶ Soft, Swift, Force & Spray coagulation
- ▶ Dual output for monopolar coagulation
- ▶ Split patient plate indicator
- ▶ Bipolar coagulation with auto start
- ▶ Automatic power regulation
- ▶ Contact quality monitoring system

Smart Feedback System



SUPERCUT

Facilitates smooth and rapid incisions enabling its usage on high impedance tissues in procedures like TUR, Orthopaedic and Oncology surgeries.



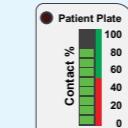
SURGICAL SETTINGS



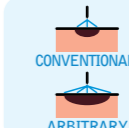
Simple Select-and-Start function for quick start. Features 6 predefined and 4 user definable surgery specific programs.

CONTACT MONITORING

Monitors and displays the quality of patient plate contact and reduces the occurrences of accidental burns. Cuts power delivery when the contact is low.



ARBITRARY SPRAY COAGULATION



Delivers quick non-contact coagulation over large surface areas by providing multiple paths for electrode spark. Highly effective in procedures involving massive and/or hidden bleeders.

surgiSKAN 100

- ▶ Microprocessor controlled
- ▶ Smart feedback system
- ▶ Monopolar & bipolar modes
- ▶ Soft, Desiccate & Fulgurate coagulation
- ▶ Bipolar coagulation with auto start
- ▶ Automatic power regulation





Dental Imaging

INTRASKAN *digiplus*

Innovative and flexible sensors with the best CMOS technology, to get better diagnosis with outstanding images, saving both valuable time and space.

Software Features

- ▶ DICOM Compliant: Easy image transfer & remote analysis
- ▶ Patient records management for easy clinical decision
- ▶ Report & print capability
- ▶ Report sharing via email
- ▶ Images & diagnostics can be shared with patient on a DICOM Compliant CD/DVD
- ▶ Pre-loaded viewing software CD/DVD

Image Functions

- ▶ Zoom glass, zoom & pan, torch light, horizontal & vertical flip
- ▶ Image enhancement & histogram equalization
- ▶ Measurements of line, point & curve
- ▶ Image invert, rotation & comments
- ▶ 3D colour rendering & bone densitometry indication
- ▶ ROI study & image fusion



Intraoral X-ray

INTRASKAN DC INTRASKAN DC *plus*

- ▶ Near zero leakage radiation
- ▶ 3 point control - kV, mA & ms
- ▶ 60-70 kV range in steps of 1kV
- ▶ 4-8 mA range in steps of 1mA
- ▶ Perfectly balanced zero-drift scissor arm
- ▶ Operator console with APR
- ▶ Intraskan DC with 0.4, 0.5 & 0.8mm Focal spot
- ▶ Intraskan DC Plus with 0.4mm Focal spot



Console



Wall mount

Floor stand



Veterinary Care

Tailor made solutions for companion, equine, farm and business animals.



SKANVET^{DR} Digital Veterinary X-Ray

- ▶ All-in-One space saving, innovative design with compact footprint
- ▶ Works from standard domestic power supply
- ▶ Immediate image preview on integrated monitor
- ▶ CsI based flat panel digital detector for high resolution imaging
- ▶ Fixed SID for simplified operation (100 cm)
- ▶ Easy to clean, infiltration proof single slab carbon-fiber table top
- ▶ Floating, lightweight Generator-Detector gantry
- ▶ Table supports animals upto 70 kg
- ▶ Single-action foot-switch
- ▶ User friendly veterinary imaging software
- ▶ Animal-patient database, over 450 breeds for cats & dogs
- ▶ Low noise for animal comfort



TruSKAN V600

- ▶ 6 Channel veterinary monitor with 12.1" high resolution LED display
- ▶ Basic configuration includes ECG, Respiration, Dual Temperature, NIBP and SpO₂ (Nellcor Oximax®)
- ▶ NIBP (Vet Algorithm) available as an option
- ▶ Upgradeable with EtCO₂ (Microstream), Dual IBP and thermal printer
- ▶ Advanced graded alarm management system
- ▶ 168 Hrs of vital trend, 500 NIBP readings and 50 alarms stored
- ▶ Connectivity options including USB and HDMI

TruSKAN V500

- ▶ 6 Channel veterinary monitor with 10.4" high resolution LED display
- ▶ Basic configuration includes ECG, Respiration, Dual Temperature, NIBP and SpO₂ (Nellcor Oximax®)
- ▶ NIBP (Vet algorithm) available as an option
- ▶ Upgradeable with EtCO₂ Microstream, Dual IBP and thermal printer
- ▶ Advanced graded alarm management system
- ▶ 168 Hrs of vital trend, 500 NIBP readings and 50 alarms stored
- ▶ Connectivity options including USB and HDMI



Standard Configuration (V600/V500)



Optional Modules (V600/V500)





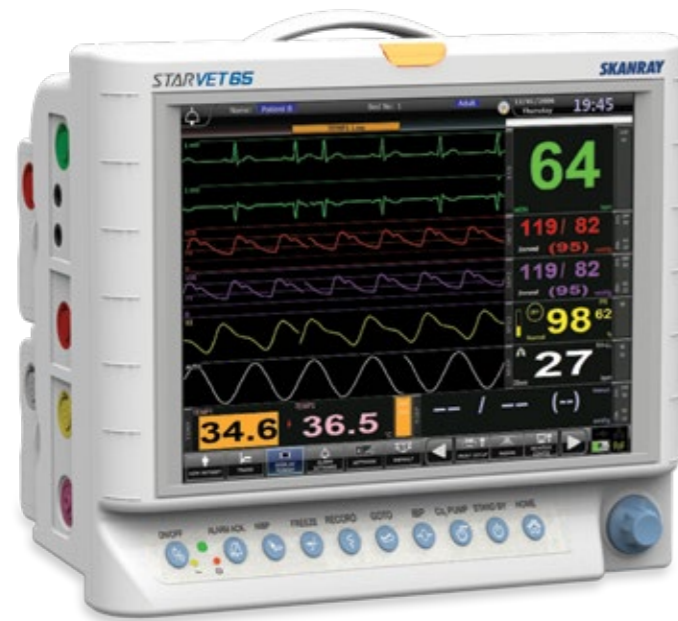
Veterinary Care

Ranging from dental to critical care, total imaging and monitoring solutions for animals.



STARVET 65

- ▶ 8 Channel modular veterinary monitor with 12.1" high resolution LED display
- ▶ Touch screen option with multiple screen formats
- ▶ Basic configuration includes ECG 3L/5L, Respiration, Dual Temperature, NIBP (Vet algorithm), SpO₂ (Nellcor Oximax®) and Dual IBP
- ▶ Upgradeable with Microstream EtCO₂, Anaesthesia gas monitoring and thermal printer
- ▶ Advanced graded alarm management system
- ▶ Connectivity options including USB, Ethernet and HDMI
- ▶ Storage options like Trend, ECG Recall, Event Recall and Waveform disclosure
- ▶ Compatible with barcode scanners



Standard Configuration



Optional Modules



INTRASKAN DC *vet*

- ▶ HF DC Veterinary Intra-Oral diagnostic X-Ray
- ▶ 100 kHz, 60 kV to 70 kV, 4mA - 8mA, 10ms - 3500ms generator range
- ▶ 0.4 mm Focal Spot
- ▶ User friendly veterinary imaging software
- ▶ Choice of 15", 24" and 33" arm lengths
- ▶ Tube overheat protection
- ▶ Available as mobile (floor mount) or wall mounted variants
- ▶ Easy adjustable arm and reliable positioning
- ▶ Automatic exposure setting for best performance at minimum dose





Healthcare Solutions

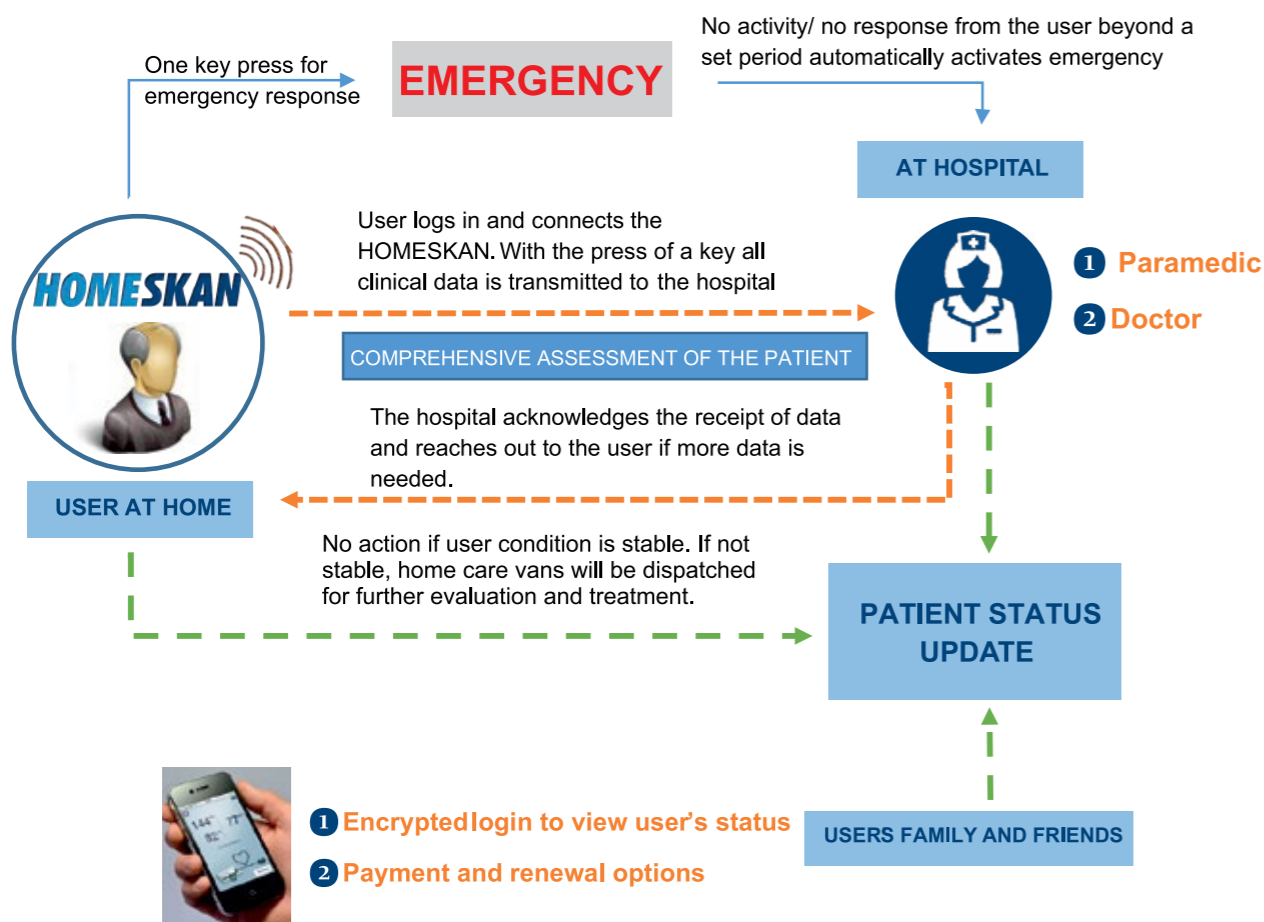


Healthcare Solutions and Turnkey projects

Skarray provides Total Healthcare Solutions from Primary to Tertiary healthcare. The solutions are customized to suit the requirements of the client. Our solutions help increase the efficiency of the doctor and deliver multi-speciality care remotely. The solutions are intuitively designed and can be run by paramedic personnel as well. We provide mobile PHCs and kiosks to be deployed in the remotest areas for telemedicine-enabled healthcare delivery.

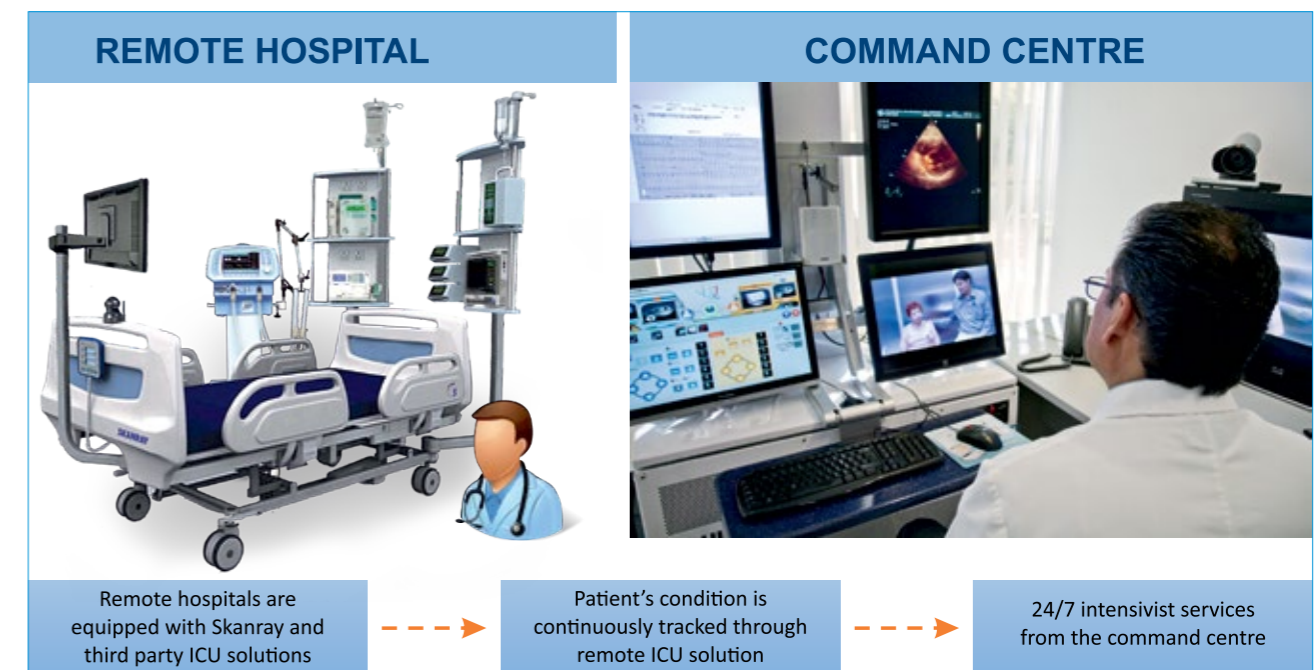
HomeSkan

Home monitor that tracks the vital physiological data of a person / patient at home and transmits it to the care provider for remote monitoring and diagnosis. Equipped to measure and record ECG, Respiration, Temperature, SpO₂, NIBP, Heart Rate, Heart Sounds, Breath Sounds, Physical Tolerance and other critical data, it is tightly integrated with a service provider such as a hospital to provide continuum of care which includes consultation, diagnostics, treatment and emergency care. The broadcast function allows the status to be shared with key family members to keep them updated of the user's condition.



Tele-ICU

Skarray's Tele-ICU solutions enable accessibility to intensivists even from a remote centre. ICU equipment are interfaced with live electronic medical record and audio visual equipment to facilitate transmission of live status of patients in ICU to the command centre. At the command centre, which provides 24/7 intensivist services, the critical care specialists continuously monitor and guide the treatment through ground staff and doctors in-charge of the ICU.





Turnkey Projects



Mobile Medical Unit

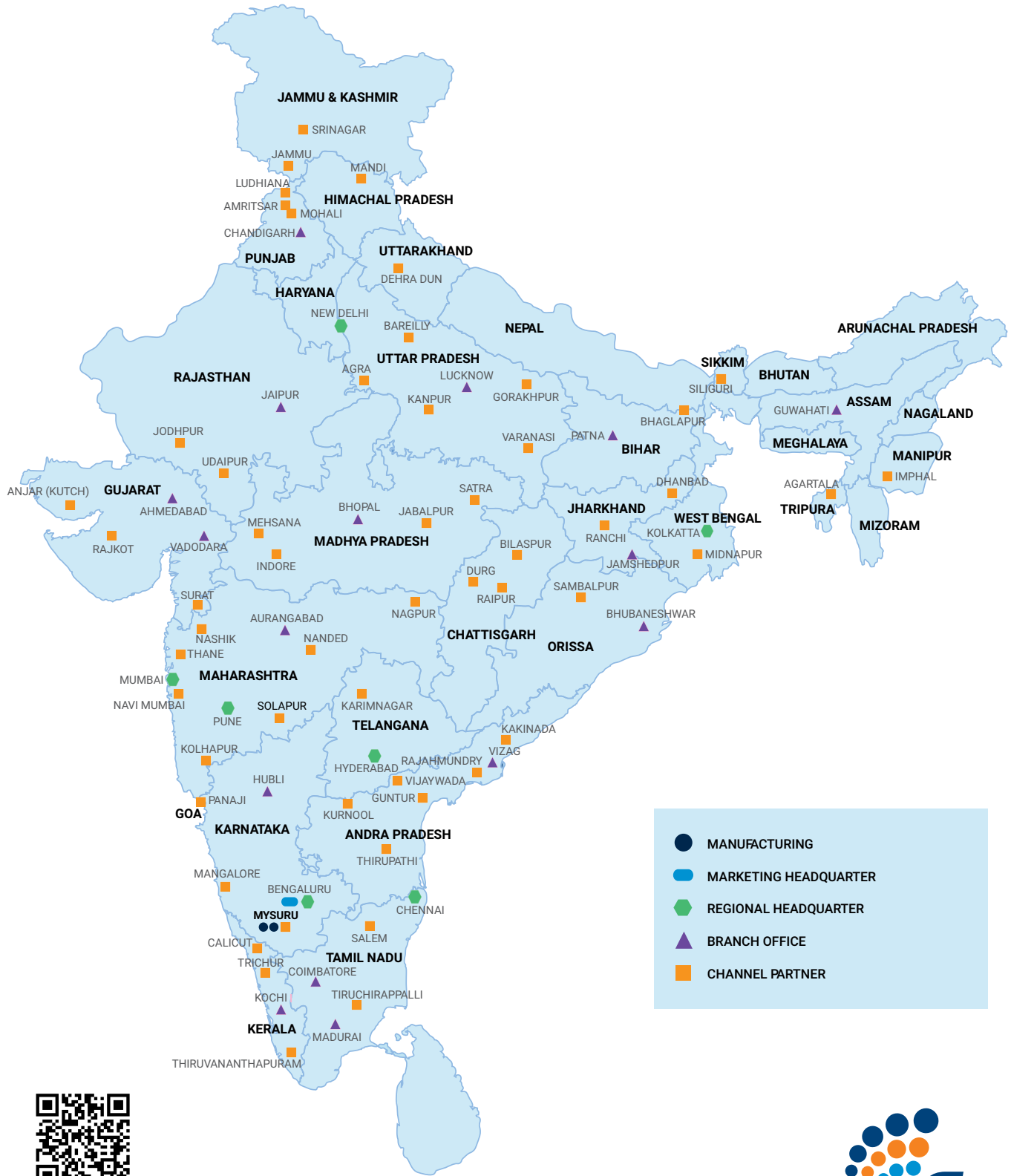
Mobile Medical Units are designed to be deployed in the remote regions where the feasibility to put up brick-and-mortar PHCs do not exist. The MMUs are essentially medical centres on wheels. They have equivalent capabilities compared to a fixed facility in delivering healthcare. Added advantage is their mobility which makes them economically feasible as they can serve a large population spread over a wide area.



Medical Kiosk

Medical Kiosks are designed to be deployed in remotest locations where the access to basic primary care is totally absent. Kiosks have self-diagnostic equipment installed along with networking capabilities and they are connected to a doctor in a telemedicine hub for diagnosis and advice. A trained paramedic can facilitate the operations of the equipment and communication with the doctor. The kiosk can also be utilized for primary care delivery in office campus, residential school, university, etc.





Skanray Technologies Ltd.

Registered Office: #15-17 Hebbal Industrial Area, Mysore - 570 016, Karnataka. Phone: +91-821-2415559.
 Healthcare Division: Plot #360, KIADB Indl. Area, Hebbal, Mysore - 570 018, Karnataka. Phone: +91-821-2407000.
 Skanray Europe SRL: Via Cicogna 36, 40068 San Lazzaro di Savena, Bologna, ITALY. Phone (+39) 051 625 5019

CUSTOMER INTERACTION CENTER: Toll Free No.: 1800-425-7002, Email: cic@skanray.com | enquiry@skanray.com



AMSTERDAM | BOLOGNA | MEXICO CITY | MICHIGAN | MYSURU | SAO PAULO | SUZHOU

Skanray continuously upgrades its technology, product performance and safety features. Pictures and specifications featured in this catalogue are only indicative. Please refer to the commercial offer document for specifications and performance.